



**USER**  
**MANUAL**  
**INFLATABLE KITE & CONTROL BAR**

[WWW.LATITUDEKITEBOARDING.COM](http://WWW.LATITUDEKITEBOARDING.COM)



## **Manual contents:**

- **Warrantee.**
- **Getting to know your gear.**
- **General terms.**
- **Safety guide lines.**
- **Wind direction layout.**
- **Inflating your kite.**
- **Kite & bar setup layout.**
- **Bar & lines setup.**
- **Connecting lines to the kite.**
- **Tuning your bar.**
- **Quick release.**
- **Rescue guidelines.**
- **Maintenance.**
- **Kite repairs.**



## **WARRANTY & RETURN POLICY**

Thank you for purchasing LATITUDE KITEBOARDING gear. We hope you will find your new gear more than satisfying your expectations.

### **CANCELING YOUR ORDER**

If your order is canceled before shipping the gear to you, we will not charge you with any cancellation commotion. Nevertheless, if your order cancellation will be after we shipped the gear, you still have the option to cancel your order & ship the gear back to us on your account. In this case, you will be charged only with the shipping costs after we received the gear back unpacked & complete as sent to you. Please note that normally we have all the gear in stock & we ship it very fast from your order confirmation. In case you received & unpacked the gear sent to you, you may return your order only under the conditions of the limited warranty.

### **ONE MONTH LIMITED PERFORMANCE WARRANTY**

LATITUDE KITEBOARDING gives the original purchaser a full refund/exchange within 30 days from the purchasing day. The warranty will be valid only if the original purchaser will address LATITUDE KITEBOARDING at [contact@latitudekiteboarding.com](mailto:contact@latitudekiteboarding.com) & confirm with LATITUDE KITEBOARDING the serial number of the kite & bar purchased as shown on the kite wingtip. This warranty is void only if: 1) the purchaser uses the gear privately & do not use the gear for any commercial use. 2) The gear has not been modified. 3) Only if LATITUDE KITEBOARDING convinced by the purchaser that the gear did not exceed his/her expectations.

### **1 YEAR LIMITED PRODUCTION WARRANTY**

LATITUDE KITEBOARDING warrants its products to the purchaser for limited period of 1 year on every defect on workmanship or material will be found on the gear & under the following conditions: 1) The purchaser uses the gear privately & do not use the gear for any commercial use. 2) The gear has not been modified. The warranty will be valid only if the original purchaser will address LATITUDE KITEBOARDING at [contact@latitudekiteboarding.com](mailto:contact@latitudekiteboarding.com) & confirm with LATITUDE KITEBOARDING the serial number of the kite & bar purchased as shown on the kite wingtip. This warranty does not cover any defects caused by improper use of the gear & other damages like improper handling and storage, high-speed crash, damage caused by use in waves or shore break, punctures, excessive sun exposure, over inflation of the bladders, improper handling and storage & damage caused by anything other than defects in the material and workmanship. LATITUDE KITEBOARDING will decide exclusively at any case whether the warranty is valid according to the proofs will be given by the purchaser alone.



## **Getting to know your gear**

With your kite package, you have the following items:

- kite.
- Kite bag.
- Pump with aluminum shaft.
- Bladder & canopy repair kit.
- Bar with 5 or 4 lines set (optional).
- Unhooked leash (optional).

Kiteboarding is a dangerous sport that could lead to a serious injury or death. Please do not use this product unless you got professional guide, read & fully understood the safety rules as showed in the safety guidelines chapter herby.

As soon as you receive your new gear, please open it carefully & check its contents to mach your exact order. If there is a mismatch, please contact our customer service at [sales@latitudekiteboarding.com](mailto:sales@latitudekiteboarding.com)  
With some safety & care, this product can bring you much enjoyment.



## **General terms**

- **Kite -**
  - Leading edge -  
Long inflatable tube located at the front of the kite & that gives the kite its "c" shape.
  - Strut/s -  
short Inflatable tube/s located at the width of the kite & connected to the leading edge.
  - Wingtip/s -  
the two tips of the kite.
  - Inflation valve -  
the valve on the leading edge of the kite from which you inflate the kite.
  - Deflation/roll over valve -  
deflation valves located on the leading edge & on the wingtips of the kite.
  - Pigtail -  
small line connection points located on the wingtips of the kite.
  - Rescue handle/s -  
strap handle/s located on the inside of the kite wingtips.
  - 5<sup>th</sup> line/pump connection point -  
the connection loop located on & in the middle of the leading edge.
- **Bar & line**
  - Chicken loop -  
small loop that connects the bar to your harness spreader bar.
  - Depower central rope -  
grey depower rope that goes thru the bar.
  - Depower handle/s -  
loop handle/s located on the depower strap colored red & black.
  - QR -  
quick release red cylinder shape system located on top of the chicken loop.



## **Safety guidelines**

Kite boarding is a dangerous sport that could result in injury or death.

Before taking any action with this product, read & make sure that you fully understand this user manual.

Do not use this product unless you got professional instruction & escort that allowed you to use this product.

Do not fly this product near crowded places & near by obstacles.

Do not fly near power lines, vehicles, airports & any other bystanders within 200 meters radius.

This is a traction device. Do not use for parachuting.

Do not use in strong &/or gusty wind conditions, off shore &/or off side shore winds &/or thunderstorms.

Always make shore that the wind condition is suitable for you & your kite size.

Make sure that the wind speed match the wind range of your kite according to your weight.

You can find the wind range for your kite model at [www.latitudekiteboarding.com](http://www.latitudekiteboarding.com) web site.

Note that the wind range on the web site is set for a 75kg rider.

Your weight has significant influence on the suitable wind range that match your kite size. The smaller your weight is, the lower is the wind range that matches your kite size comparing to heavier riders.

Note that this product is not a flotation device. Fly it only on a water area.

Always make sure that you wear protection & floating clothing.

Always wear a hamlet & impact flotation vest. In sunny weather, make sure to put sun Screen & in cold weather, always take care & wear a worm wet suit. Do not attempt to ride in extreme weather conditions.

Make sure that you have a knife to cut the lines in case of emergency.

Do not fly this kite near other people. Note that you are responsible to the safety of your Surrounding & yourself.

Do not surf far from the shore. Always make sure that you can swim back the surfed distance From the shore.



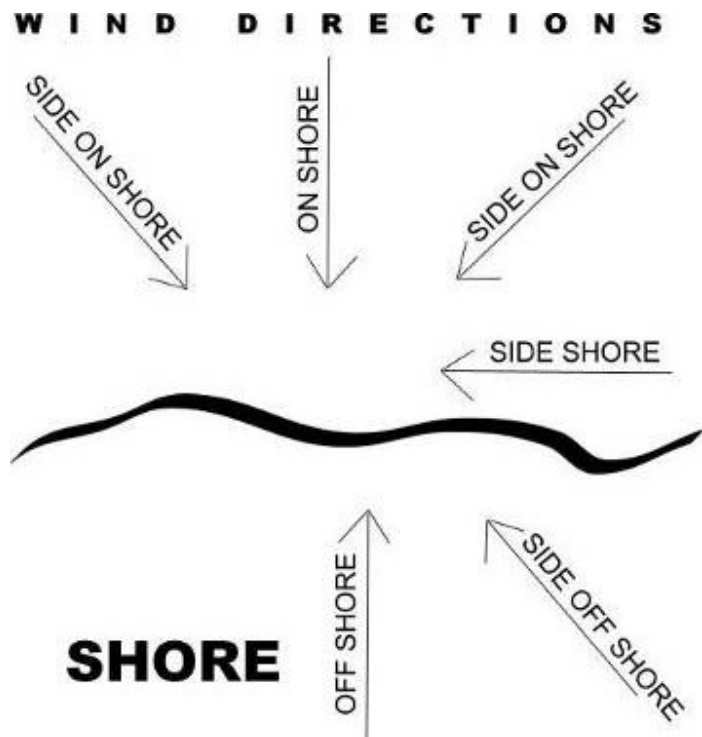
Do not kiteboard at night.

Check your quick release system before launching the kite & make sure that you know how to operate it.

Do not let other kiteboarders to use your equipment.

Before launching your kite, make sure that you know the wind condition. Take your time & check the wind speed & direction. Wait a while before launching to see if the wind is picking up & if the wind is gusty. Try to estimate, as good as you can, the upcoming wind conditions. Wind speed & direction can change in a sudden way.

## Wind direction layout





## **Wind indicators**

Force	Wind speed				description	Wind speed indicators	
	MPH	Knots	KPH	Meter/sec		At see	On land
0	<1	<1	<1	0-0.2	calm	smooth as glass	calm; smoke rises vertically
1	1-3	1-3	1-5	0.3-1.5	light air	ripples with no appearance of scales; no foam crests	smoke indicates wind direction; vanes do not move
2	4-7	4-6	6-11	1.6-3.3	light breeze	small wavelets; crests of glassy appearance	wind felt on face; leaves rustle ;vanes begin to move
3	8-12	7-10	12-19	3.4-5.4	gentle wind	crests begin to break; scalloped whitecaps	leaves & small things in motion ;light flags extended
4	13-18	11-16	20-29	5.5-7.9	moderate wind	numerous whitecaps	leaves & loose paper rise up ;flags flap; small branches move
5	19-24	17-21	30-38	8.0-10.7	fresh wind	many whitecaps; some spray	small trees begin to sway; flags flap & ripple
6	25-31	22-27	39-50	10.8-13.8	strong wind	foaming whitecaps everywhere; more spray	large branches in motion; whistling heard in wins
7	32-38	28-33	51-61	13.9-17.1	near gale	white foam blown in streaks	whole trees in motion; resistance felt in walking against the wind
8	39-46	34-40	62-74	17.2-20.7	gale	edges of crests beginning to break	whole trees in motion; resistance felt in walking against the wind (again)
9	47-54	41-47	75-86	20.8-24.4	strong gale	se begin to roll; dense streaks of foam	slight structures damage occurs ;shingles blow from roofs
10	55-63	48-55	87-101	24.5-28.4	storm	white churning sea; rolling is heavy; reduced visibility	trees broken/uprooted; considerable structure damage occurs



## Inflating your kite

Before inflating your kite, make sure that you fully understood the wind direction & speed. Open your kite spread it on the beach & ensures it from flying as in the photos hereby.

Steps 1 - Inflating the struts:



1. Lay your kite on the ground parallel to the wind direction.
2. Ensure the kite from flying by adding sand or a soft pad on its tip closest to the wind direction origin.
3. Connect the inflation tube to the pump.
4. Inflate the kite then close all clamps between the struts & LE valves.



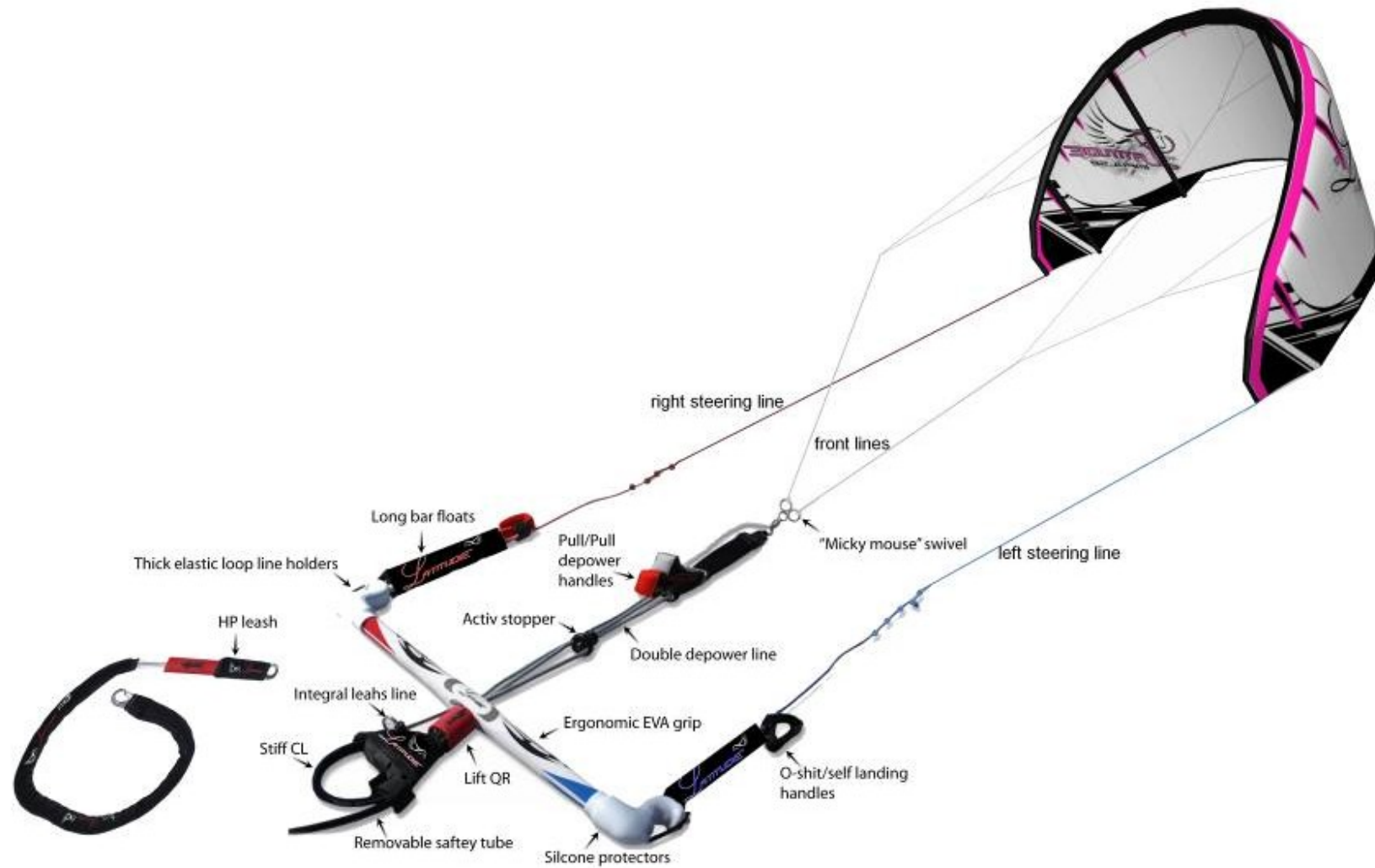
Disconnect the pump from the inflation valve, close the inflation valve tight, disconnect the pump leash from the kite, hold the kite on the leading edge (always), flip the kite on the beach - leading edge facing the wind, reinforce the kite from dragging/flying by adding sand on the front of the canopy part (do not put any sharp objects on the canopy):



Now you can start with unwinding the lines from your bar in order to connect it to the kite.



## Kite & bar setup layout





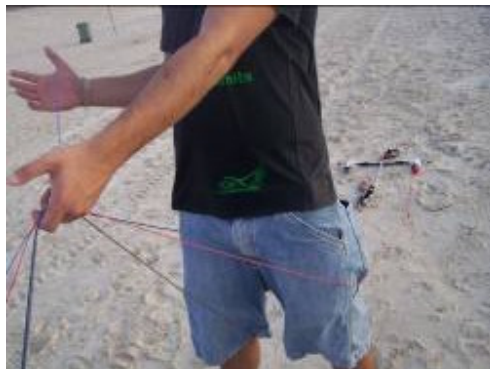
## **Bar & lines setup**

You can unwind your bar line in many ways however, we recommend that you use the downwind method as follows:

- Stand behind your kite & start unwinding the lines all the way downwind direction & Place your bar on the ground - red side to your right when you face the kite.

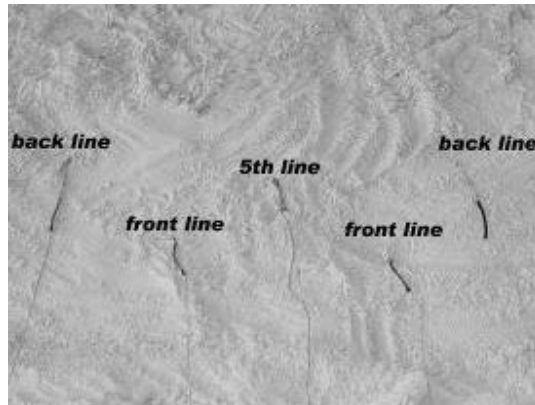


- Secure the bar to the ground & start unwinding the lines while your legs are standing between the back lines & the front lines. Use your fingers to separate the front & 5<sup>th</sup> lines (in case of 5-line bar setup). Make sure that you do not loose your fingers grip & position of the lines while unwinding them.





- Spread your lines on the ground as they came out from your hand when you reached the end of them. When placing the lines on the ground, make sure to keep a reasonable distance between the lines to prevent them from tangling:



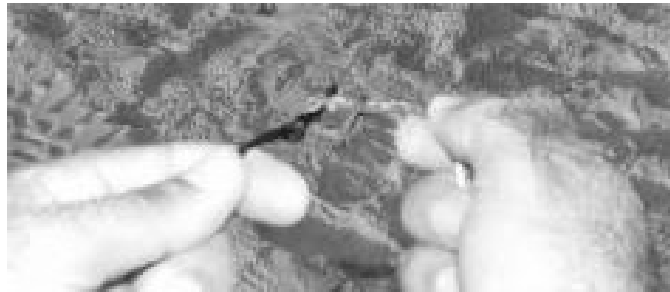
Make sure that the line does not tangle & that they do not have any crosses.



## Connecting the lines to the kite

Start connecting the lines at the following steps:

- Connecting the 5<sup>th</sup> line (if your bar is 4-line then simply skip this part)- on the bar end of the 5<sup>th</sup> line you there is loop. This loop connects to the pigtail knot on the 5<sup>th</sup> line ending segment that is connected to your kite as you can see in the herby photo:



- Connecting the front lines- just as the 5<sup>th</sup> line connection, connect the front lines to the pigtail front lines connection on the kite with the loop knot. Make sure to tighten the loop knot to prevent it from releasing. Note that on your kite wingtip you have 2-line connection point. These points increase/decrease the kites' power as marked on the kite. Make sure that you connect your kite front lines to the same connection points on both sides otherwise; the kite will be unstable in the air & will pull to one direction. Note that the front connection points are the points that are closer to the leading edge:





- Connecting the back lines-  
to prevent a connection mistake between the front & the back lines, your SOF-X bar back lines are equipped with a pigtail knot connection (unlike the front lines that are equipped with loops) & the kite back lines connection point are equipped with loops (the opposite connections from the front lines).



## **Tuning the bar**

Your bar have several leader lines with pigtail connections on it in order to help you to tune your bar setting to rich perfect performance from the kite. Note that a bar that is not tuned correctly may lead to unreasonable/unwanted performance behavior of the kite. Tuning the bar is important to get high results from the kite performance.



Adjusting the depower ability of the kite-  
you can depower your kite by shorten the length of the front lines in two ways; the first is from the depower system. The depower system is equipped with cleat & red loop handle. Pulling it & locking it on the cleat will depower the kite:



Pulling the red handle down & locking it on the cleat will depower the kite.  
Pulling the red handle up will power up the kite.



## **Quick release:**

At any case of stress &/or unwanted behavior of the kite &/or if you think that there is even the smallest doubt regarding your safety &/or of others do not heisted to activate the quick release & release the kite power.

Your bar system is equipped with a quick release pull up system. The quick release handle is used to release the kite tension leaving the kite connected to you with the leash only or releasing the kite completely depending on the connection point you choose to connect the HP leash.

Below are some photos of the quick release system:



**Important notice: always check your QR system before flying the kite.**



## **Rescue guidelines**

In a case of self-rescue, when your kite is inflated & lies down on the water, you can use the kite as a traction device to take you to the beach assuming that the wind is onshore/side onshore. Your Latitude kite is equipped with rescue handles located on the inter part of its wingtip.

## **Maintenance**

Your kite can serve & give you enjoyment much longer with just some good care & maintenance:

- Avoid having knots on your lines. A knot on the line is a weak point that might cause the line to break at this point.
- After each ride, check your kite for small tears. Fixing a small tear in advance, might save it from becoming a big tear.
- Prevent petroleum, tar & any other harmful materials from the kite.
- Do not expose your kite to sunlight for extended periods of time.
- Avoid getting sand into your bladders.
- If your kite got wet in salty water, rinse it with fresh water while it is still inflated, let it dry completely & then fold it to its bag.
- Always rinse your bar & lines in fresh water.
- Fold your kite softly. Do not squeeze the kite hard while folding it.



## **Kite repairs**

With your kite, you get a bladder repair kit that includes stickers & small mark cloth straps.

The mark cloth is for temporarily repair of small tears in your canopy. The stickers are for repairing leaks on your bladders.

Taking out a bladder:



1. Disconnect the cap from the valve. 2. Tie one of the bar lines to the valve with the loop. 3. Press the valve inside. 4+5. Put the valve inside with the line 6. Take the Velcro closer out. 7+8. Pull the bladder out.

Placing the bladder to its original position:

9. Put some talc powder on the bladder to make it slide to its position easily, connect the valve to the loop line again & place the bladder over the line 10. Squeeze the bladder tip carefully inside the strut until you valve is inside the strut as well. 11. Pull the bladder inside the strut by the line until the valve reaches its hole & take the valve out of the hole. If the valve is tangled with the bladder, shake it while holding the line until it is released. When pulling the bladder, make sure that it is straight & not twisted. 12. Inflate the bladder carefully to low pressure. 12. Make sure that it is not twisted & that the tip of the bladder is inflated up to the leading edge.



**THANK YOU FOR CHOOSING LATITUDE KITEBOARDING.  
WE WISH YOU SAFE & FUN RIDE...**



LATITUDE KITEBOARDING LTD  
Explore your limits  
[WWW.LATITUDEKITEBOARDING.COM](http://WWW.LATITUDEKITEBOARDING.COM)